

**davidf@persistence-energy.com**

---

**From:** Shawn Lafleur <slafleur@blackspuroil.com>  
**Sent:** January 27, 2022 11:50 AM  
**To:** davidf@persistence-energy.com  
**Subject:** FW: Well Summary to 4000 m MD

---

**From:** Kelsey Glennie <kglennie@tallmangeological.ca>  
**Sent:** January 27, 2022 10:38 AM  
**To:** Shawn Lafleur <slafleur@blackspuroil.com>  
**Subject:** Well Summary to 4000 m MD

Shawn:

From the standpoint of the amount of free oil and gas, closer to the toe looks to be equivalent to 4-11 or possibly a better section of the well. The increase in free oil may be due to oil in the system, but the concentration has definitely increased on the sample wash water from spotty to even and thick.



3100



3300



3960 Oil coating a new sample cup.

Sample wise, the lithology has predominantly remained the same throughout the well. Grain size is generally lower to upper fine sand. Consolidation varies somewhat from unconsolidated to moderately consolidated. It sometimes appears there is about 50% staining on the grains and other times down to 10%. To me, this seems to be more of a product of washing the samples rather than the amount of actual oil. Overall, there is likely about 30-40% oil surrounding the grains. These photos don't show it as well as through the scope. There is lighter brown oil on the crystal edges.



2250

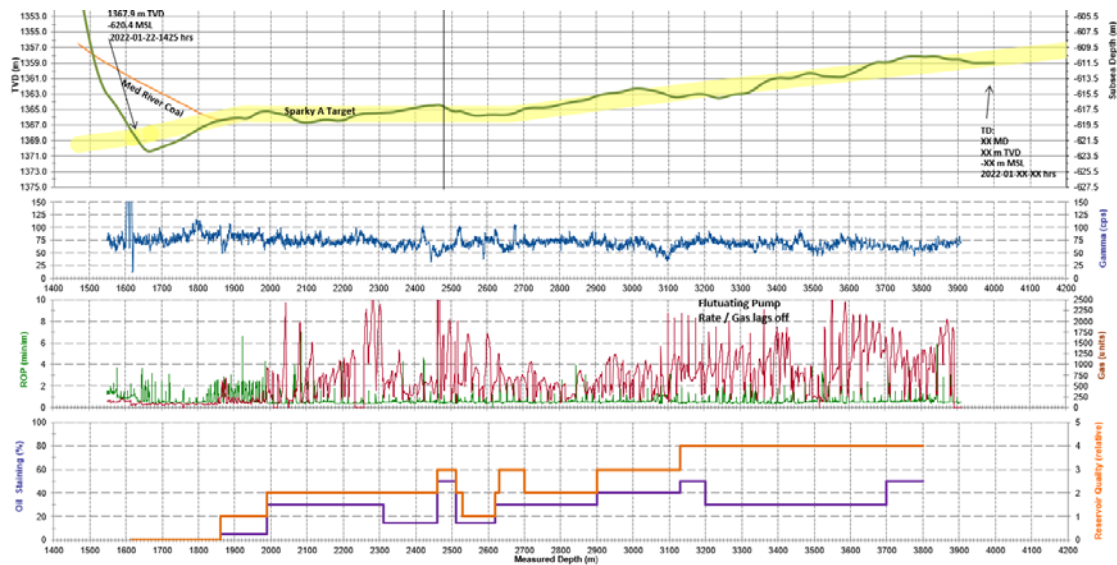


3220



3380

Drilling wise, we are at -611.5 and about 50 to 75 cm below the middle of our target window. We're having to slide to maintain 90 degrees and hoping that one of these slides will produce well and get the bit to 91+. We'll then be able rotate a few stands. Our Overall ROP is currently 33 m/hr, so we would have 5.5 hours to TD. If we can rotate the majority, it would take about 4 hours. If we need more sliding, we have about 6 hours to 4200 m MD.



Hope this helps.

Kelsey Glennie B.Sc.



1 (306) 526-6305  
 124 Emerald Park Rd.  
 Regina, Saskatchewan  
 S4S 4X6  
[www.tallmangeological.ca](http://www.tallmangeological.ca)  
[kglennie@tallmangeological.ca](mailto:kglennie@tallmangeological.ca)